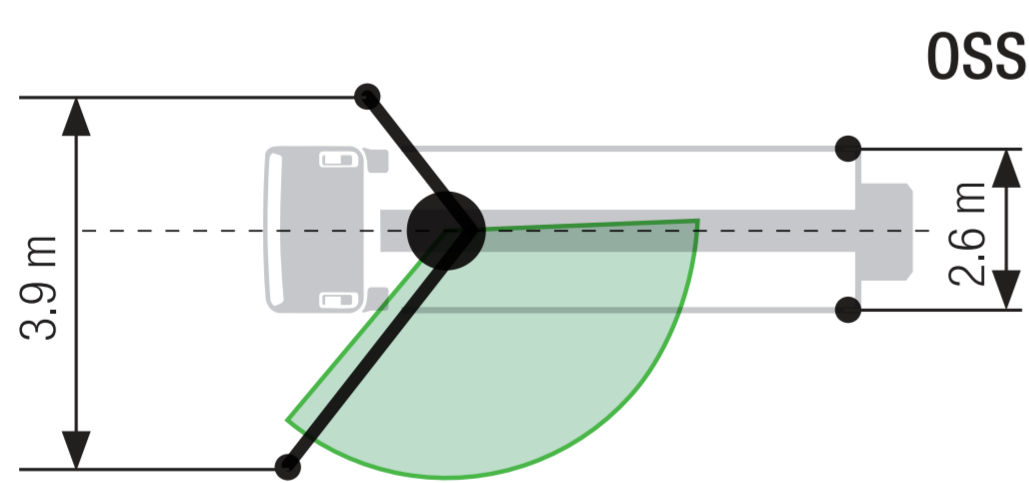
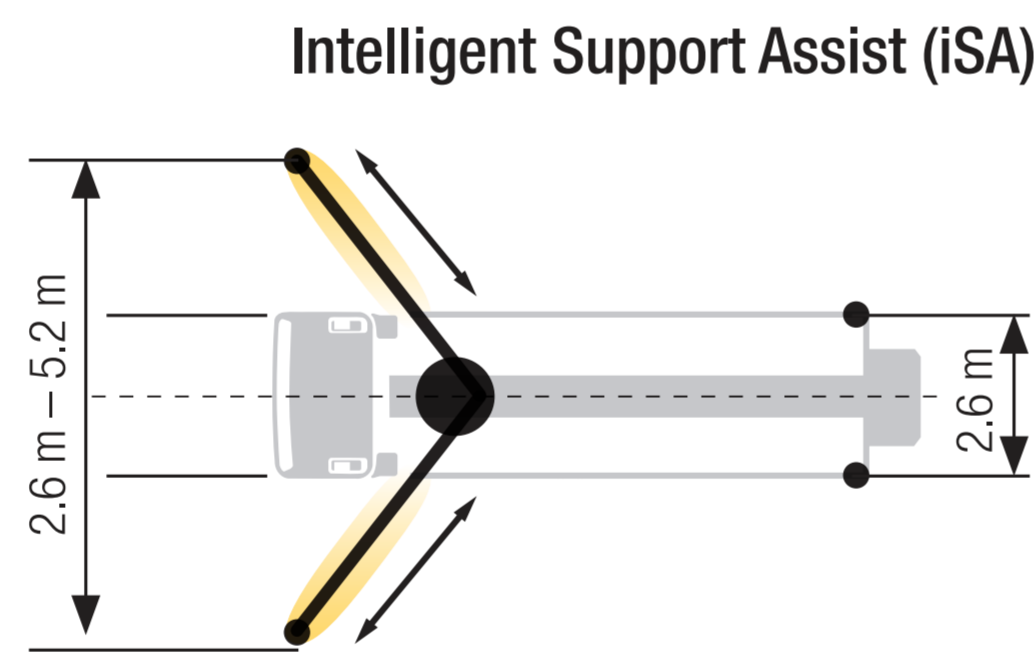
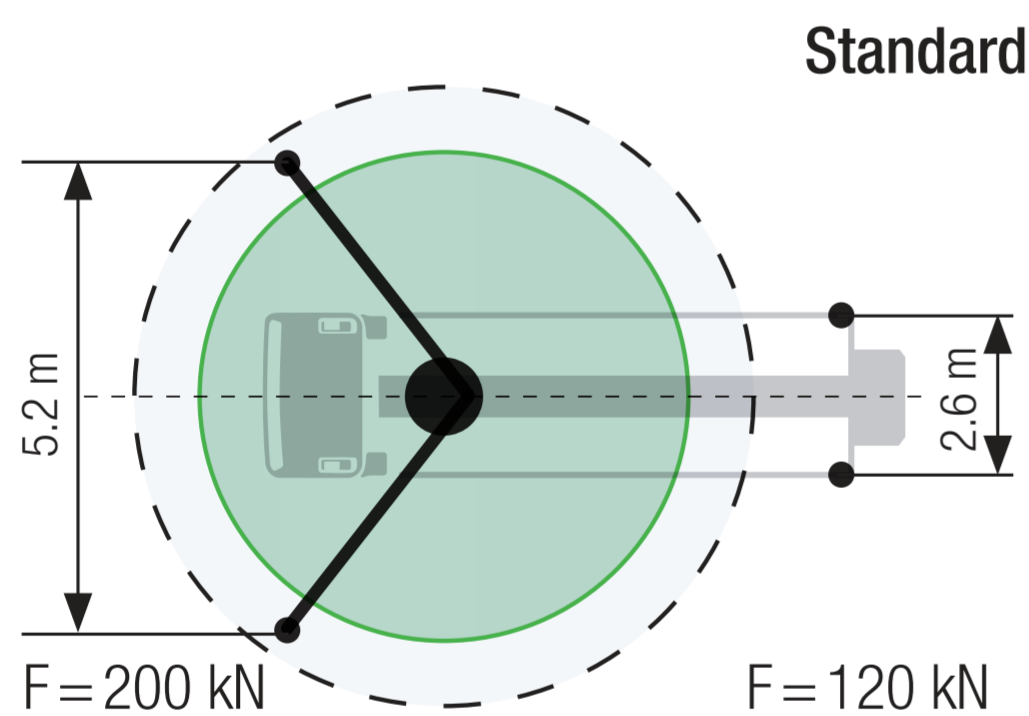
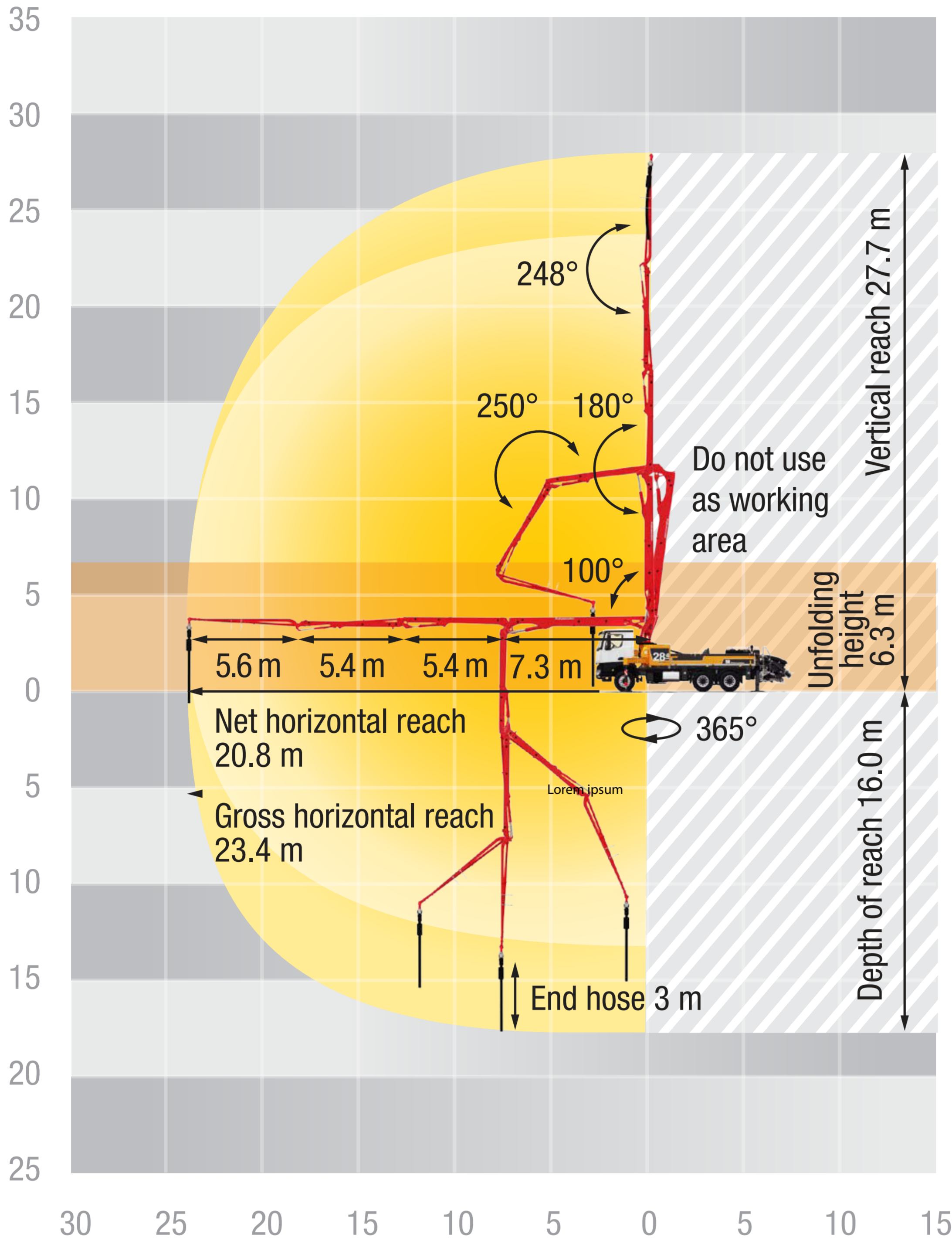
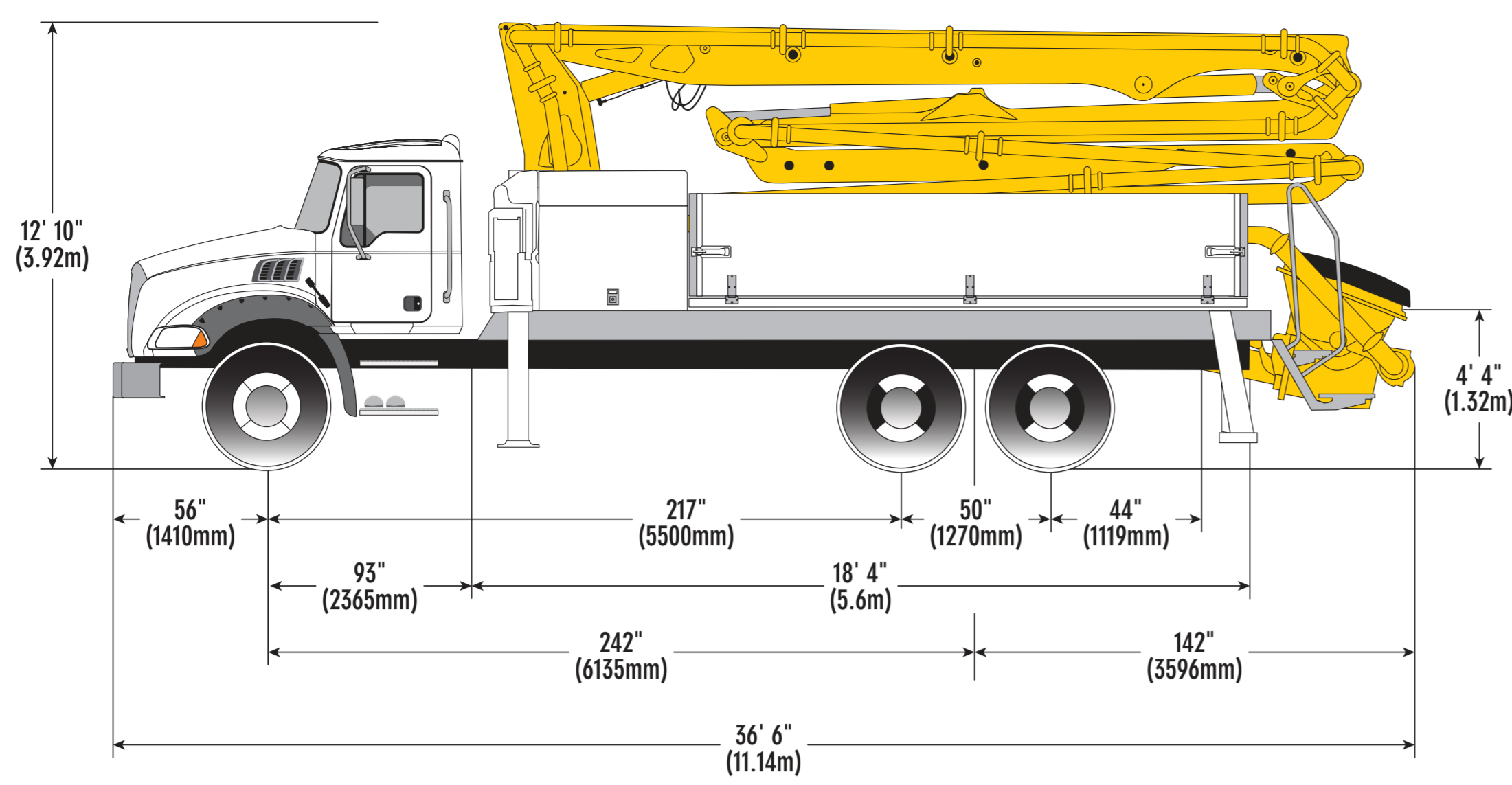


PUTZMEISTER 28Z



28Z-Meter Truck-Mounted Specifications

Length	36' 6"	(11.14 m)
Width	8' 2"	(2.50 m)
Height	12' 10"	(3.92 m)
Wheelbase	242"	(6,135 mm)
Front axle weight	14,978 lbs	(14,020 kg)
Approx total weight	45,886 lbs	(20,814 kg)

Based on Model MACK Granite with .16H pump cell.
 Weights are approximate and include pump, boom, truck, driver and some fuel. Varies with options selected.
 Dimensions will vary with different truck makes, models and specifications.

Boom Specifications | Multi-Z Design

Height & Reach		
Vertical reach	90' 11"	(27.7 m)
Horizontal reach	76' 9"	(23.4 m)
Reach from front of truck*	68' 3"	(20.8 m)
Reach depth	52' 6"	(16.0 m)
Unfolding height	20' 8"	(6.3 m)

4-Section Boom

1st section articulation	100°	
2nd section articulation	180°	
3rd section articulation	250°	
4th section articulation	248°	
1st section length	23' 11"	(7.3 m)
2nd section length	17' 9"	(5.4 m)
3rd section length	17' 9"	(5.4 m)
4th section length	18' 4"	(5.6 m)

General Specifications

Pipeline Size (ID) metric ends	5"	(125 mm)
Rotation	365°	
End hose — length	10' 0"	(3.00 m)
End hose — diameter	5"	(125 mm)
Outrigger spread L-R — front	17' 1"	(5.2 m)
hydraulically extended out & down		
Outrigger spread L-R — rear	8' 6"	(2.6 m)
lift cylinders extend down		

Pump Specifications

	28Z.12 H	28Z.16H
Output — rod side	144 yd ³ /hr (110 m ³ /hr)	209 yd ³ /hr (160 m ³ /hr)
Output — piston side	97 yd ³ /hr (74 m ³ /hr)	141 yd ³ /hr (108 m ³ /hr)
Pressure — rod side	1,233 psi (85 bar)	1,233 psi (85 bar)
Pressure — piston side	1,885 psi (130 bar)•	1,885 psi (130 bar)•
Material cylinder diameter	9" (230 mm)	9" (230 mm)
Stroke length	83" (2,100 mm)	83" (2,100 mm)
Maximum strokes per minute		
Output — rod side	21	31
Output — piston side	14	21
Volume control	0-Full	0-Full
Vibrator	Standard	Standard
Hard-chromed material cylinders	Standard	Standard
Hydraulic system	Free Flow	Free Flow
Hydraulic system pressure	5,075 psi (350 bar)	5,075 psi (350 bar)
Differential cylinder diameter	5.1" (140 mm)	5.1" (140 mm)
Rod diameter	3.1" (80 mm)	3.1" (80 mm)
Maximum size aggregate	2.5" (63 mm)	2.5" (63 mm)
Water tank — pedestal	185 gal (700 L)	185 gal (700 L)

Maximum theoretical values listed.
 * Applies to units mounted on PMA stock truck — MACK Granite
 • Standard delivery line system rated at max line pressure of 1,233 psi (85 bar)
 † 0.9 pump cell also available