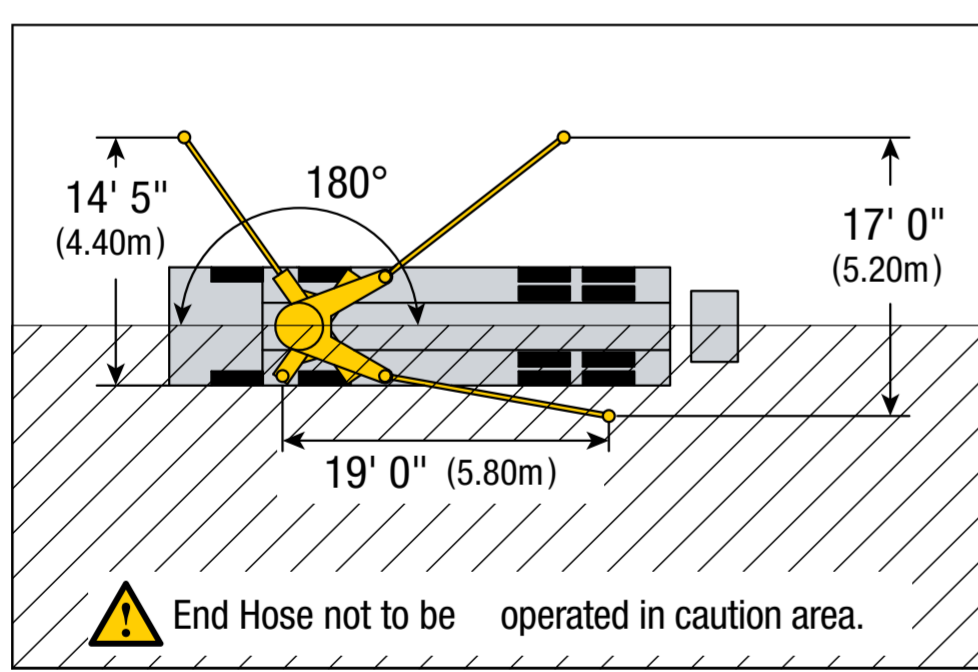
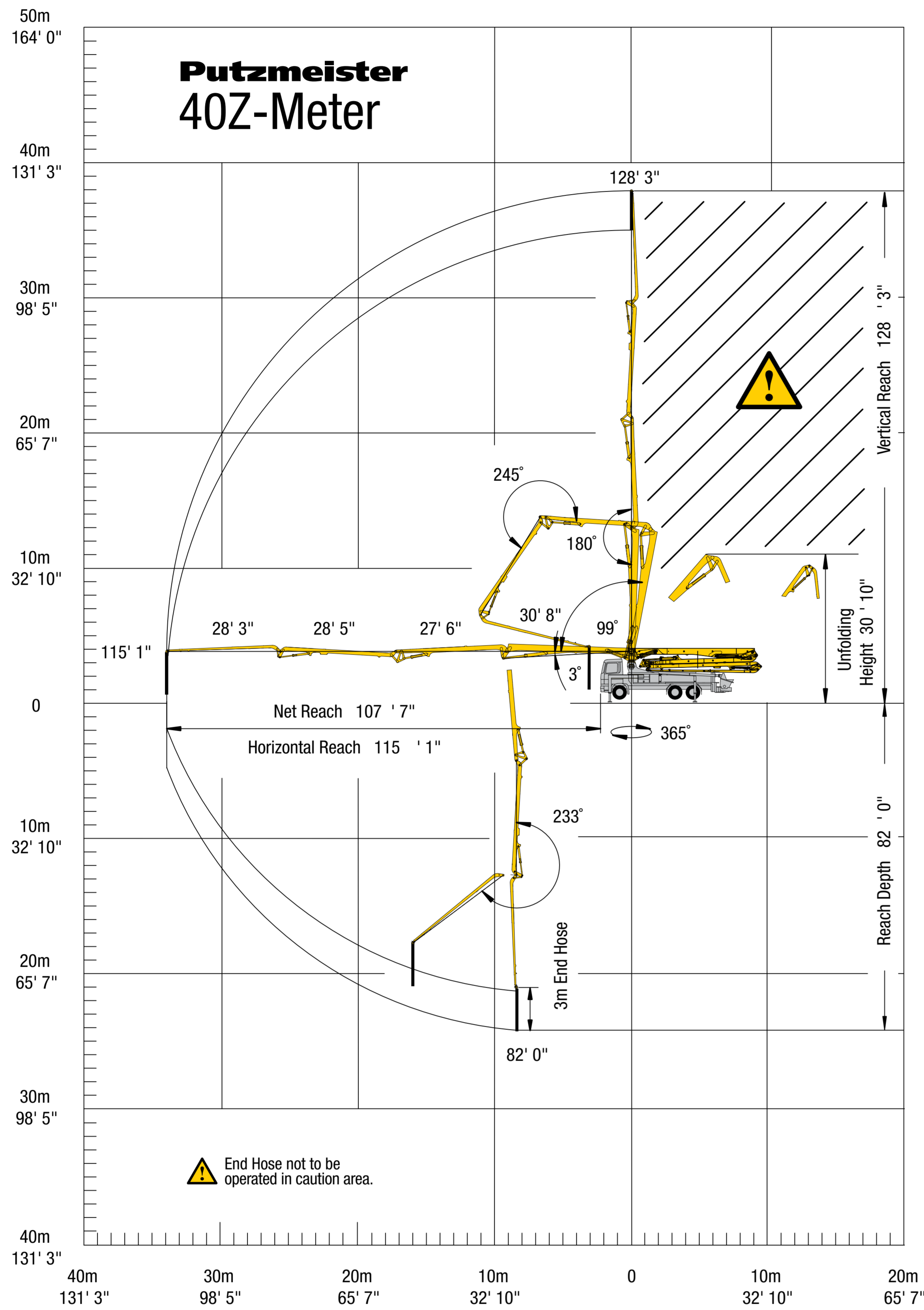
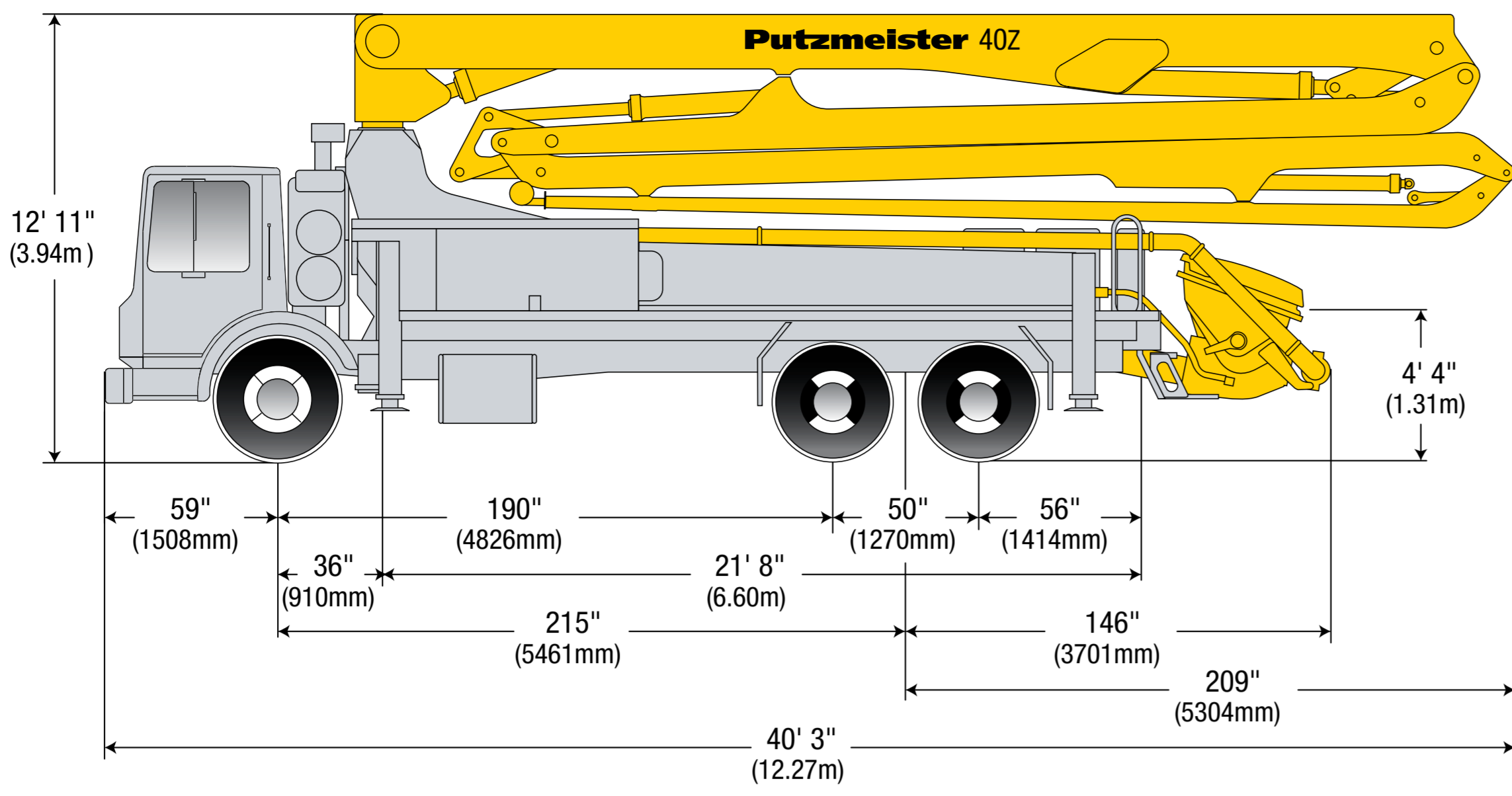
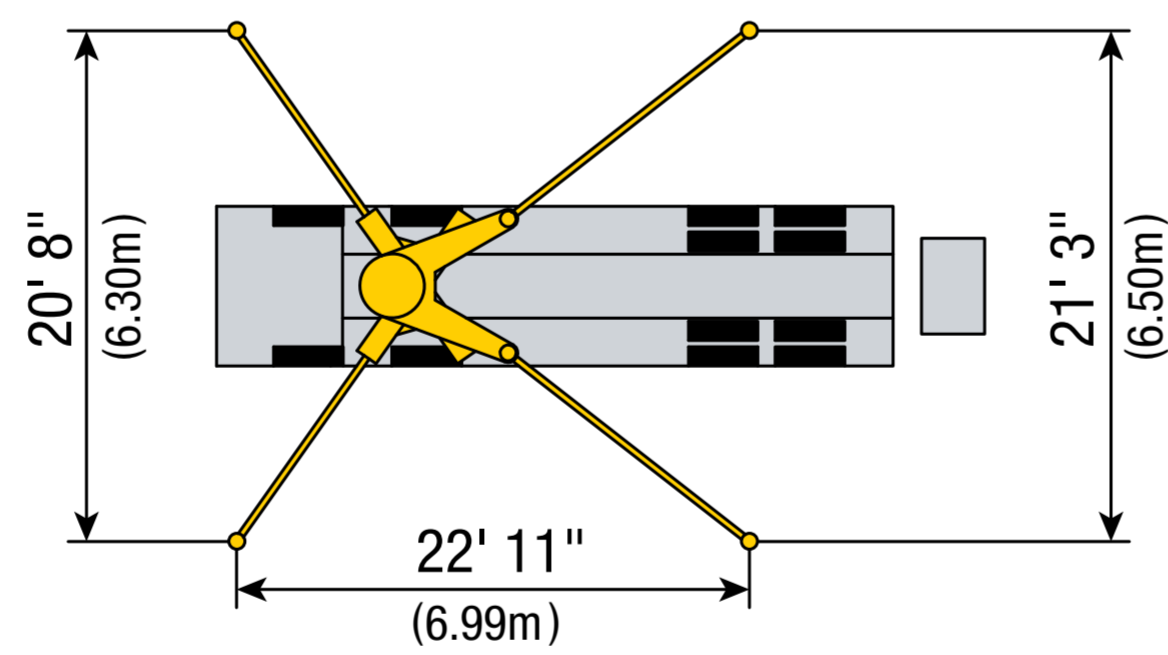


PUTZMEISTER 40Z



With One-Sided Support (OSS) 180°



40Z-METER TRUCK-MOUNTED SPECIFICATIONS

| | | |
|----------------------|------------|------------|
| Length | 40' 3" | (12.27m) |
| Width | 8' 2" | (2.50m) |
| Height | 12' 11" | (3.94m) |
| Wheelbase | 215" | (5,461mm) |
| Front axle weight | 18,760 lbs | (8,510kg) |
| Rear axle weight | 38,470 lbs | (17,450kg) |
| Approx. total weight | 57,230 lbs | (25,960kg) |

Based on Model MACK MRU 613 with .16H pump cell.
Weights are approximate and include pump, boom, truck, driver and some fuel.
Dimensions will vary with different truck makes, models and specifications.

BOOM SPECIFICATIONS | MULTI-Z DESIGN

| | | |
|----------------------------|---------|----------|
| Height & Reach | | |
| Vertical reach | 128' 3" | (39.10m) |
| Horizontal reach | 115' 1" | (35.10m) |
| Reach from front of truck* | 107' 7" | (32.80m) |
| Reach depth | 82' 0" | (25.00m) |
| Unfolding height | 30' 10" | (9.40m) |

| | | |
|--------------------------|--------|---------|
| 4-Section Boom | | |
| 1st section articulation | 102° | |
| 2nd section articulation | 180° | |
| 3rd section articulation | 245° | |
| 4th section articulation | 233° | |
| 1st section length | 30' 8" | (9.40m) |
| 2nd section length | 27' 6" | (8.40m) |
| 3rd section length | 28' 5" | (8.70m) |
| 4th section length | 28' 3" | (8.60m) |

| | | |
|--------------------------------|--------|---------|
| General Specs | | |
| Pipeline Size (ID) metric ends | 4.6" | (117mm) |
| Rotation | 365° | |
| End hose— length | 10' 0" | (3.00m) |
| End hose — diameter | 4.5" | (115mm) |
| Outrigger spread L - R — front | 20' 8" | (6.30m) |
| Outrigger spread L - R — rear | 21' 3" | (6.50m) |

PUMP SPECIFICATIONS

| | 40Z.12H | 40Z.16H |
|--|---|---|
| Output — rod side | 144 yd ³ /hr (110m ³ /hr) | 210 yd ³ /hr (160m ³ /hr) |
| Output — piston side | 97 yd ³ /hr (74m ³ /hr) | 141 yd ³ /hr (108m ³ /hr) |
| Pressure — rod side | 1,233 psi (85 bar) | 1,233 psi (85 bar) |
| Pressure — piston side | 1,885 psi (130 bar) | 1,885 psi (130 bar) |
| Material cylinder diameter | 9" (230mm) | 9" (230mm) |
| Stroke length | 83" (2,100mm) | 83" (2,100mm) |
| Maximum strokes per minute — rod side | 21 | 31 |
| Maximum strokes per minute — piston side | 14 | 21 |
| Volume control | 0-Full | 0-Full |
| Vibrator | Standard | Standard |
| Hard-chromed material cylinders | Standard | Standard |
| Hydraulic system | Free Flow | Free Flow |
| Hydraulic system pressure | 5,075 psi (350 bar) | 5,075 psi (350 bar) |
| Differential cylinder diameter | 5.5" (140mm) | 5.5" (140mm) |
| Rod diameter | 3.1" (80mm) | 3.1" (80mm) |
| Maximum size aggregate | 2.5" (63mm) | 2.5" (63mm) |
| Water tank— pedestal | 185 gal (700L) | 185 gal (700L) |

Maximum theoretical values listed.
* Applies to units mounted on PMA stock truck — MACK MRU 613
• Standard delivery line system rated at max line pressure of 1,233 psi (85 bar)
• Ergonic Pump System (EPS) is standard.